

ARCHITECT

MIDDLE EAST

NEWS, DATA, ANALYSIS AND TRENDS FOR ARCHITECTS IN THE GCC

Smart cities
Is technology
always the
answer?

48

Technology
Innovations in
design solutions

58

PERSPECTIVES
GAJ SCHOOL
PROJECT

22

HOSPITALITY
THE FUTURE
DEBATED

16

AWARDS

Architect of the Year

All the winners,
the news and the
views from the
2014 event

26



PLUS

ABC
Design inspirations

Waterfront
La Mer in miniature

NEIGHBOURS ON THE PALM – THE HORIZONTAL AND THE VERTICAL HOMES

Dubai's twins look out over city and sea

Low-level contrast with high-rise in the forms of the Horizontal Home and the Vertical Home - which are the names of two villas set to be built on Dubai's Palm Jumeirah.

The two complementary designs sit on the waterfront of the man-made island and are the work of a studio founded by Omid Rouhani, an expert in desert architecture who used his experience to provide as sustainable a living space as possible - while also giving the properties the best views possible out across the Arabian Gulf.

Both properties have been moved slightly around the original axis in order to fully give residents the benefit of their location - with its urban cityscape skyline and natural marine environment.

"The homes are next door to one another and provide a contrast," said the architect who runs his own practice OmidRouhani Architectural Design. But they both have similar factors in common - such as an emphasis on sustainable design with

→ **Trees form a major part of both initial concepts providing shade and allowing heat to dissipate.**

↓ **The Horizontal Home.**



↑ **The storied structure provides a contrast to its lower-lying house next door - another unusual design for Dubai's Palm Jumeirah beachfront. It is reached by concrete stepping stones from the road and path.**

← **The Vertical Home looks out across the fronds of the man made island towards the Atlantis Hotel.**

the use of natural features such as running waters and trees.

"In my view the most important factor when designing in this region has to be addressing the extreme climatic conditions by maximising the orientation to achieve the most desirable results.

"Passive design solutions such as, thermal mass, use of shading devices - artificial or natural - and the correct orientation is always at the forefront of our design solutions.

"Most of these are drawn from our regions rich traditions architecture and in my opinion is always the best and most effective solutions."

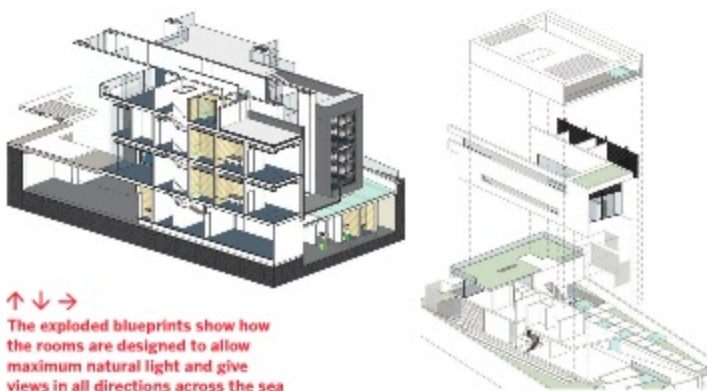
The Vertical Home - with a floor area of 1,288m² is located on one of the fronds of the palm and looks out over the plush Atlantis Hotel.

Access from the street is via a series of concrete stepping-stones located on top of decorative pools which link the structure with the street.

The entrance consists of a triple-high atrium space which allows for both city and sea views with a linear-wooden staircase and a rooftop gymnasium and



↑ Roof top gym included.



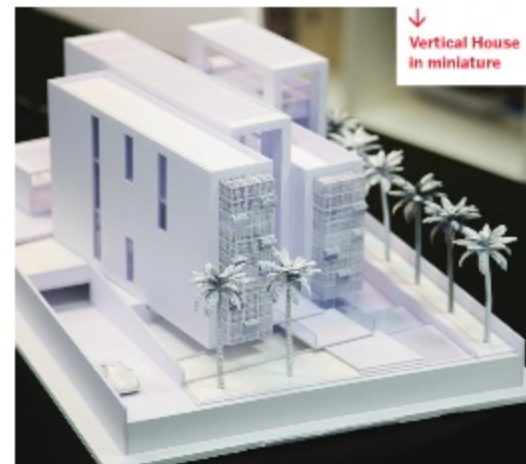
The exploded blueprints show how the rooms are designed to allow maximum natural light and give views in all directions across the sea and towards the city.



↓ Cascading pools and exterior greenery are included as a feature of the design which emphasises natural cooling solutions.



Omid Rouhani studied architecture at University of Arizona, Tucson, USA and achieved his Master's degree specialising in designs for a desert environment. In 1996 he moved from the USA to Dubai and was among the first wave of architects who helped to direct the growth of the city and was an influential member of the design community. Rouhani joined the academic world in 1998 and worked at the American University of Sharjah and Zayed University where he is still a full time faculty member. "I was also working with clients on projects at the same time," he said. "And there was so much demand that in 2010 I decided to form my own company and business has increased ever since." His business currently works on projects across the entire Middle East, Europe, Asia and Africa.



↓ Vertical House in miniature



THE HOMES ARE NEXT DOOR TO ONE ANOTHER AND PROVIDE A REAL DESIGN CONTRAST"

— Omid Rouhani



↑ Academic and designer Omid Rouhani.

infinity pool.

Rouhani said: "Some parts of the exterior are extended while other are push into the structure. Cascading pools naturally cool the basement area, while automated shutters based on the regional traditional Arabic Mashrabia designs open and close according to the direction

and position of the sun."

The Horizontal Home – with its 920m² floor area – incorporates many similar features and also includes a roof-top pool. But it also has a hanging garden over the basement and its parking ramp.

"The client also required a roof-top lap pool and gym as he is interested in athletic pursuits and he wanted them where they would command the best views," said Rouhani. ●